

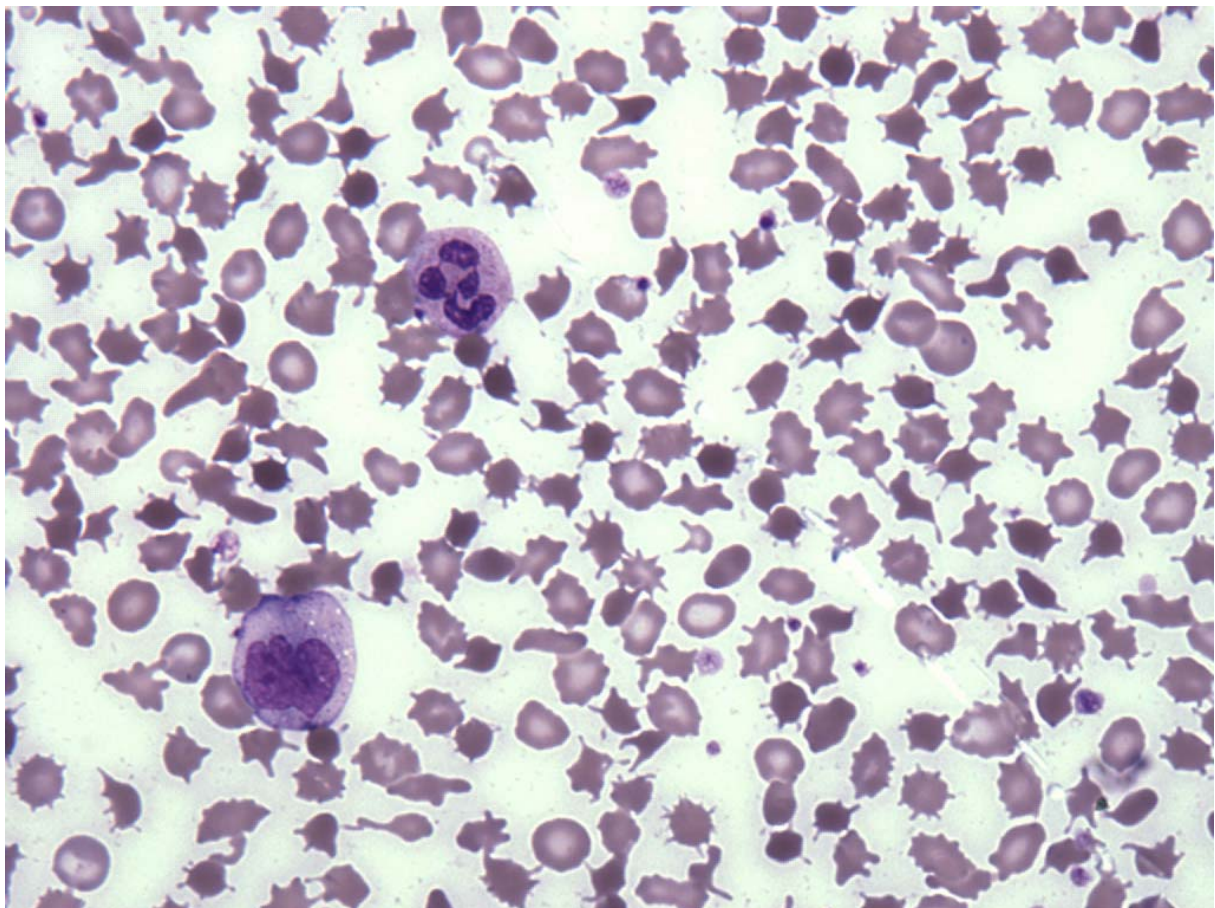


INTERIM REPORT: MORPHOLOGY PROGRAM

CASE STUDY MP5-10a

DIAGNOSIS: Hereditary Acanthocytosis

Illustrated below is a photograph taken from Slide MP5-10a to demonstrate the morphological features in case study 1.



Discussion and other diagnostic interpretations that have been considered acceptable, by the Morphology Committee, will be listed in your final report.