



Haematology

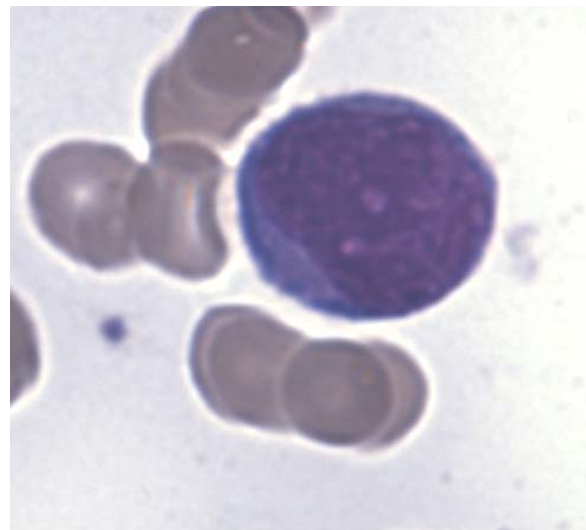
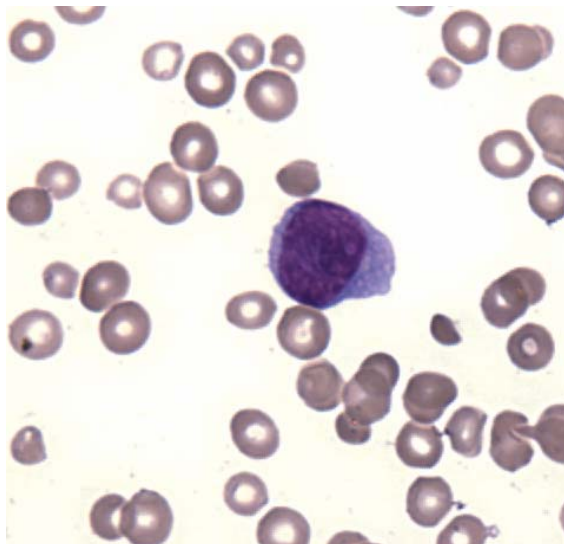
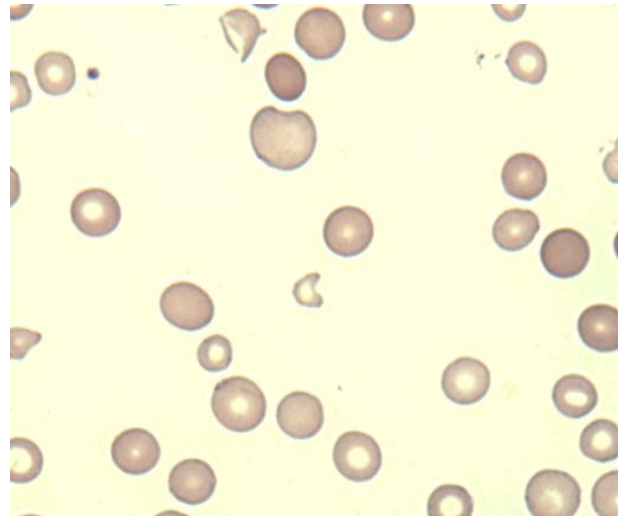
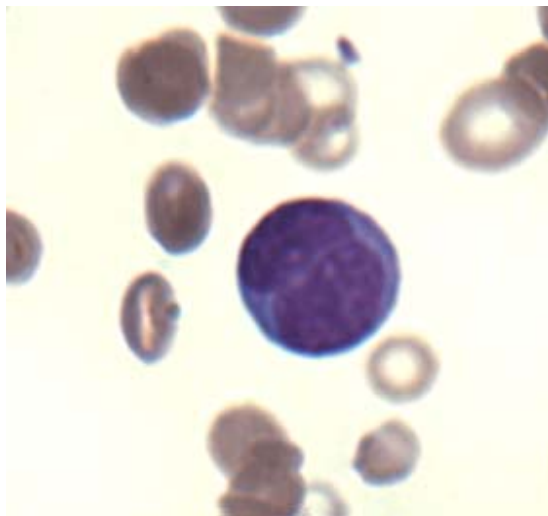
PO Box 50, Westmead
NSW 2145 Australia
T +61 2 9845 7038
F +61 2 9891 5376
haemqap@rcpaqap.com.au
www.rcpaqap.com.au

INTERIM REPORT: MORPHOLOGY PROGRAM

CASE STUDY MP6-05b

DIAGNOSIS: AML- Therapy Related

Illustrated below are photographs taken from Slide MP6-02b to demonstrate the morphological features in this case study.



Discussion and other diagnostic interpretations that have been considered acceptable, by the Morphology Committee, will be listed in your final report.