



Haematology

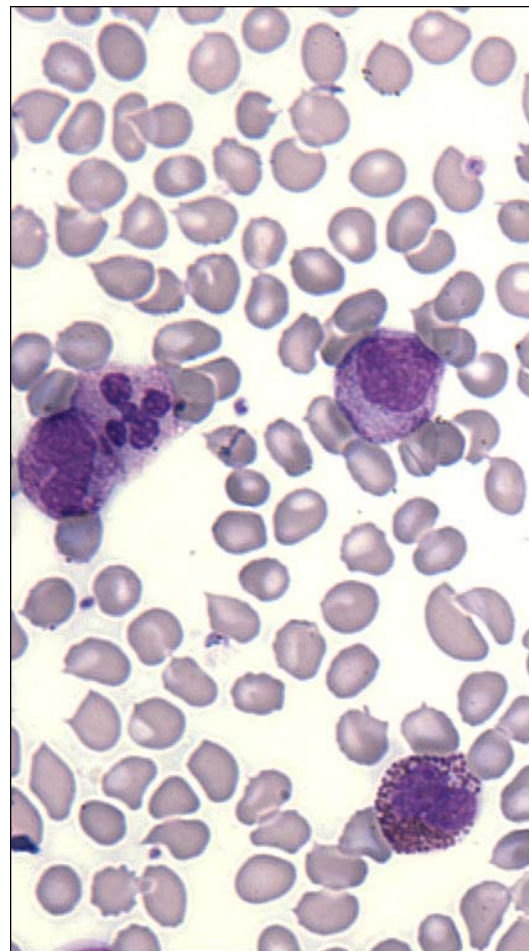
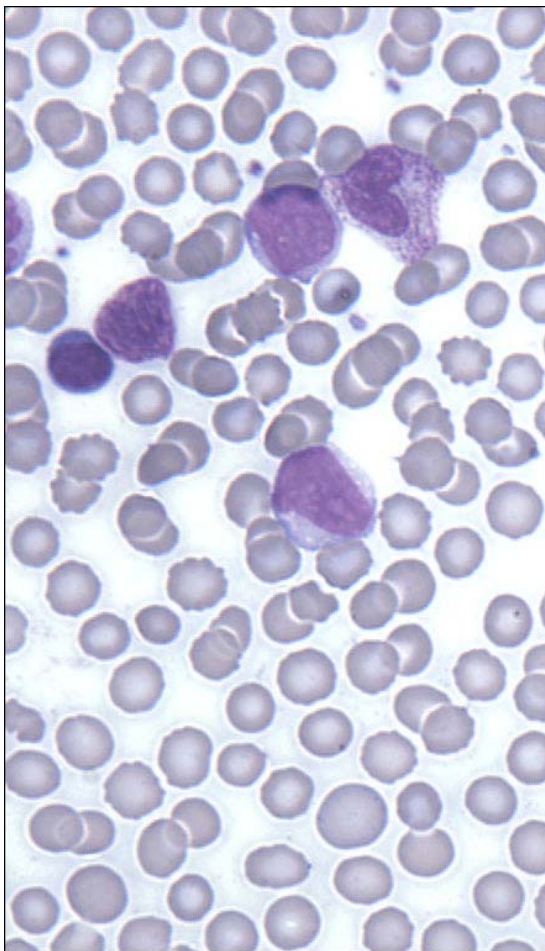
PO Box 50, Westmead
NSW 2145 Australia
T +61 2 9845 7038
F +61 2 9891 5376
haemqap@rcpaqap.com.au
www.rcpaqap.com.au

INTERIM REPORT: MORPHOLOGY PROGRAM

CASE STUDY MP6-10b

DIAGNOSIS: Chronic Myeloid Leukaemia + LPD

Illustrated below are photographs taken from Slide MP6-10b to demonstrate the morphological features in case study 2.



Discussion and other diagnostic interpretations that have been considered acceptable, by the Morphology Committee, will be listed in your final report.