



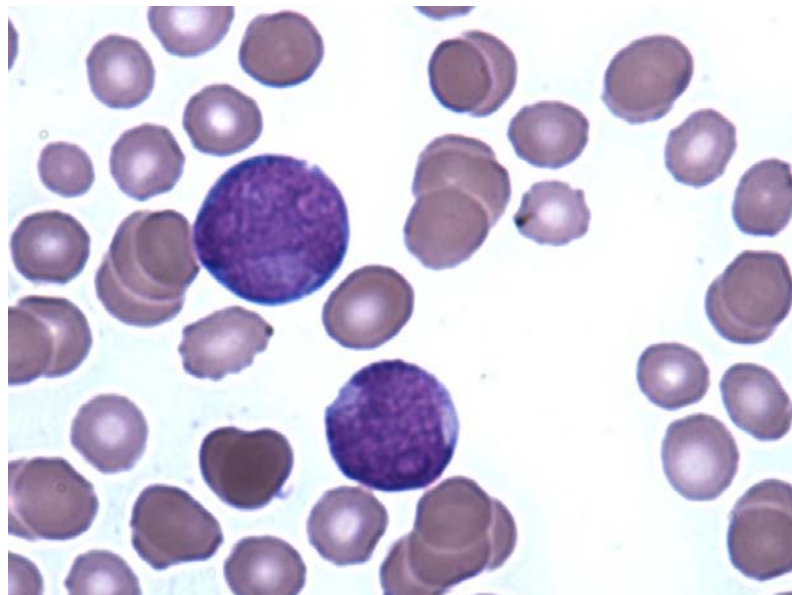
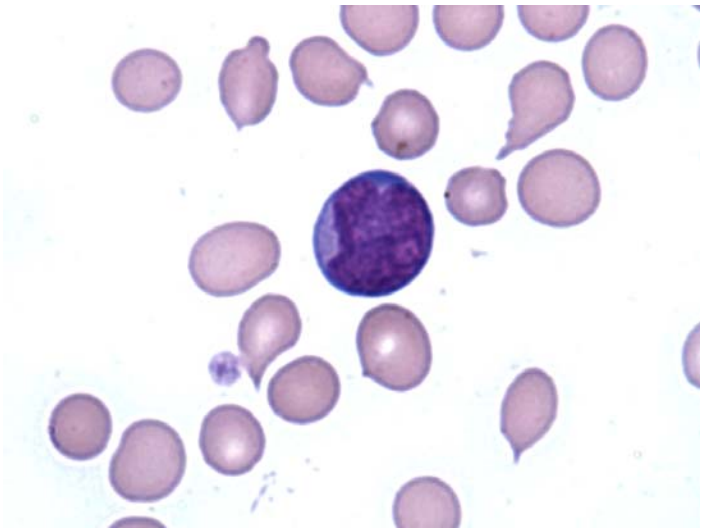
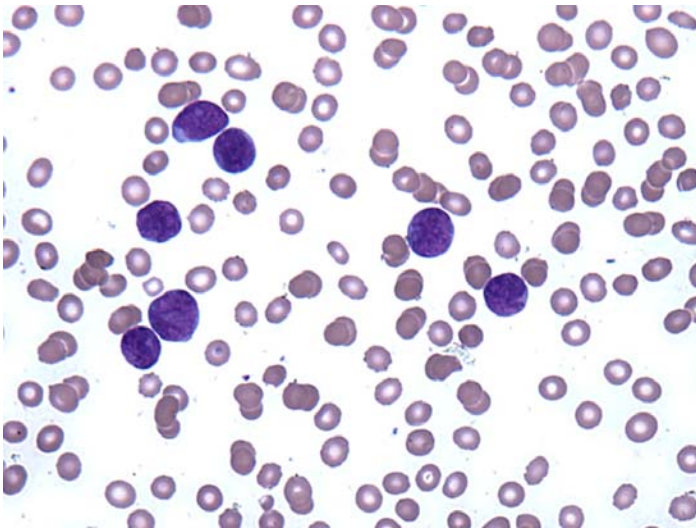
## Haematology

PO Box 50, Westmead  
NSW 2145 Australia  
T +61 2 9845 7038  
F +61 2 9891 5376  
haemqap@rcpaqap.com.au  
www.rcpaqap.com.au

### INTERIM REPORT: MORPHOLOGY PROGRAM

#### CASE STUDY MP7- 02b DIAGNOSIS: Acute Myeloid Leukaemia

Illustrated below are photographs taken from Slide MP7-02b to demonstrate the morphological features in case study 2.



Discussion and other diagnostic interpretations that have been considered acceptable, by the Morphology Committee, will be listed in your final report.