

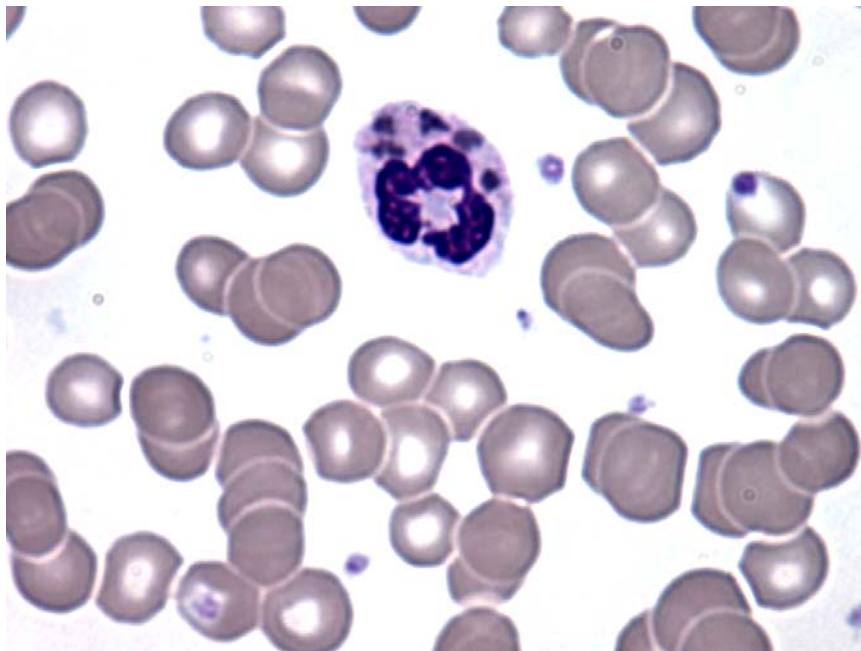
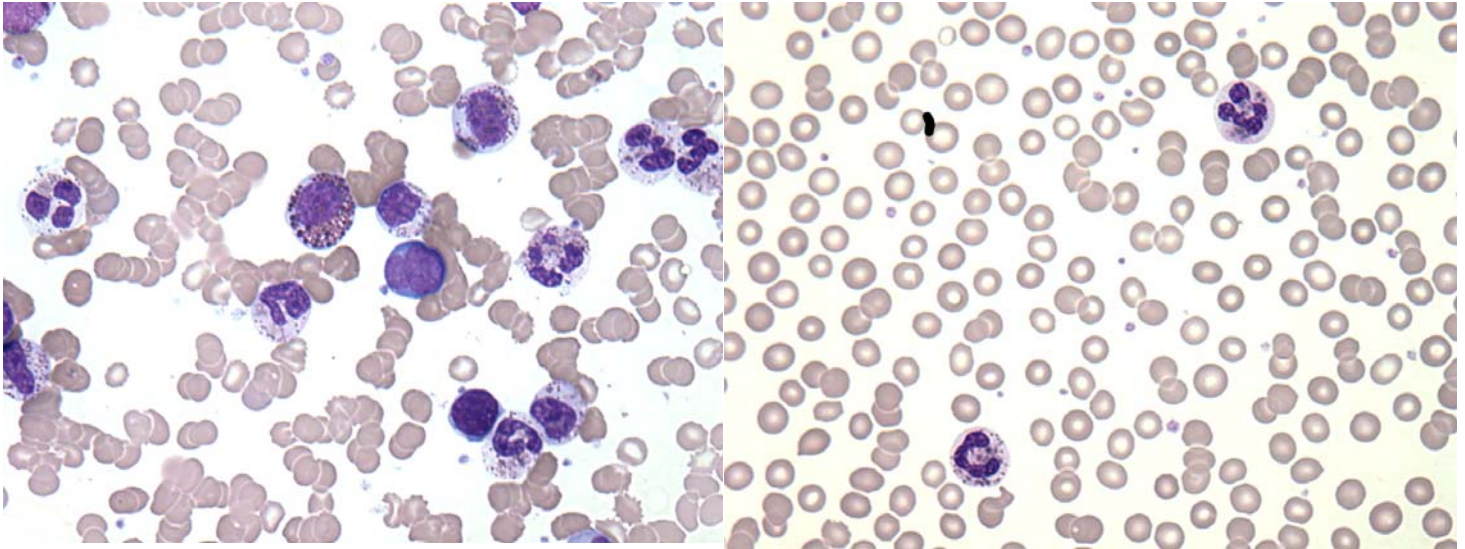


Haematology

PO Box 50, Westmead
NSW 2145 Australia
T +61 2 9845 7038
F +61 2 9891 5376
haemqap@rcpaqap.com.au
www.rcpaqap.com.au

INTERIM REPORT: MORPHOLOGY PROGRAM
CASE STUDY MP7- 02c DIAGNOSIS: Chediak Higashi Syndrome

Illustrated below are photographs taken from Slide MP7-02c to demonstrate the morphological features in case study 3.



Discussion and other diagnostic interpretations that have been considered acceptable, by the Morphology Committee, will be listed in your final report.