

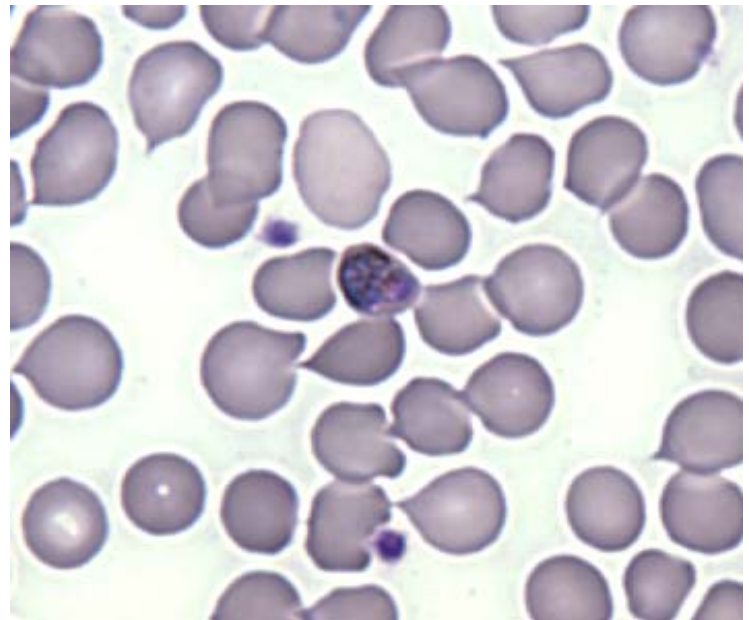
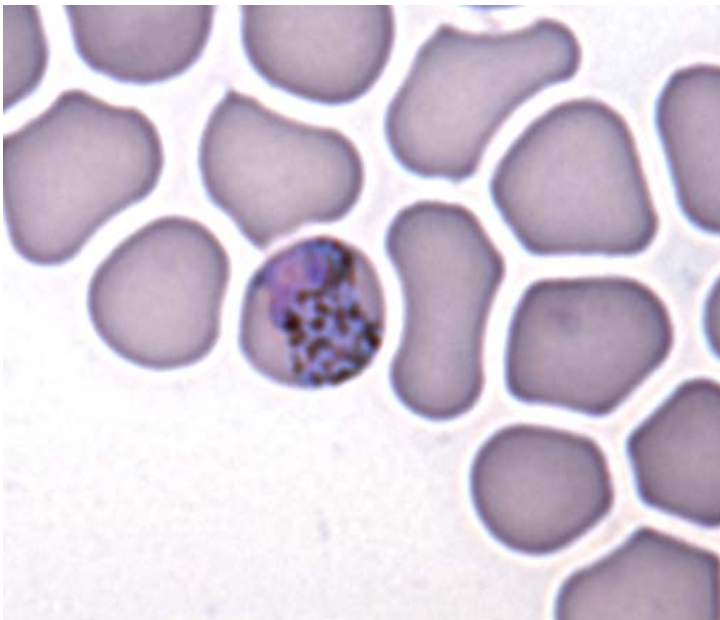
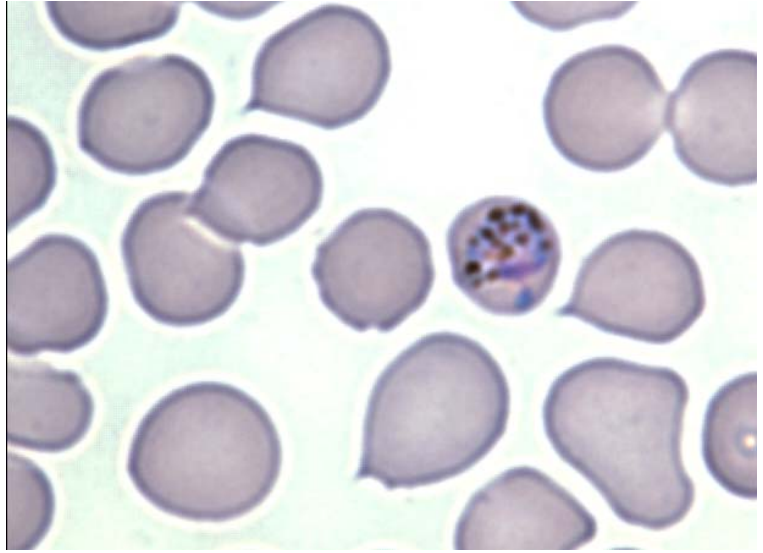
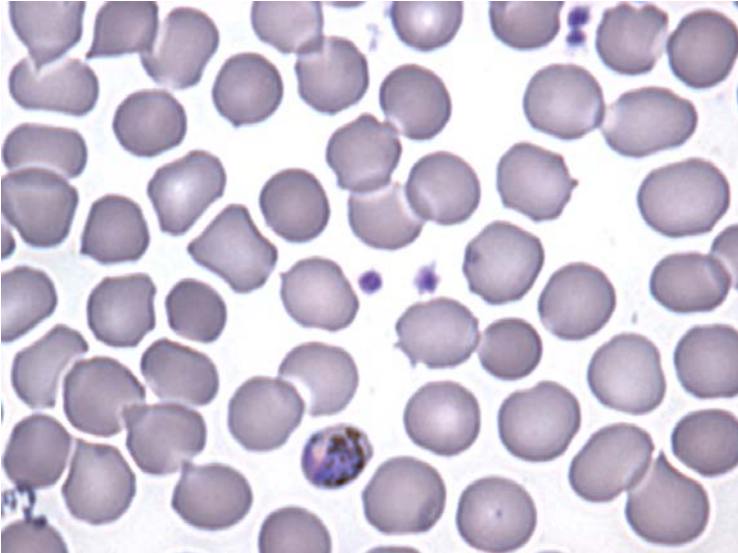


## Haematology

PO Box 50, Westmead  
NSW 2145 Australia  
T +61 2 9845 7038  
F +61 2 9891 5376  
haemqap@rcpaqap.com.au  
www.rcpaqap.com.au

**INTERIM REPORT: MORPHOLOGY PROGRAM  
CASE STUDY MP7- 05c DIAGNOSIS:  
Plasmodium Malariae**

Illustrated below are photographs taken from Slide MP7-05c to demonstrate the morphological features in case study 1.



Discussion and other diagnostic interpretations that have been considered acceptable, by the Morphology Committee, will be listed in your final report.