



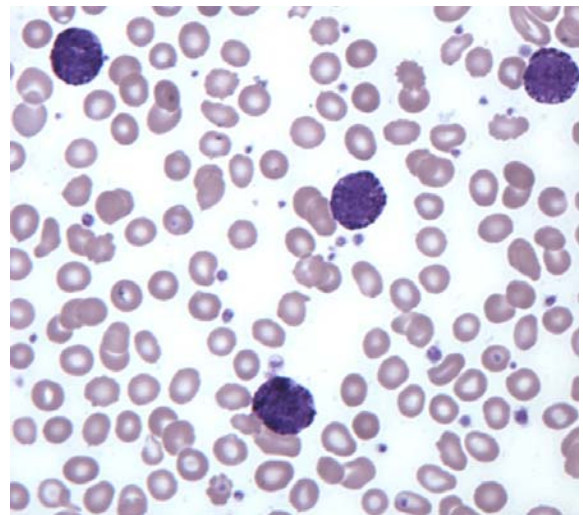
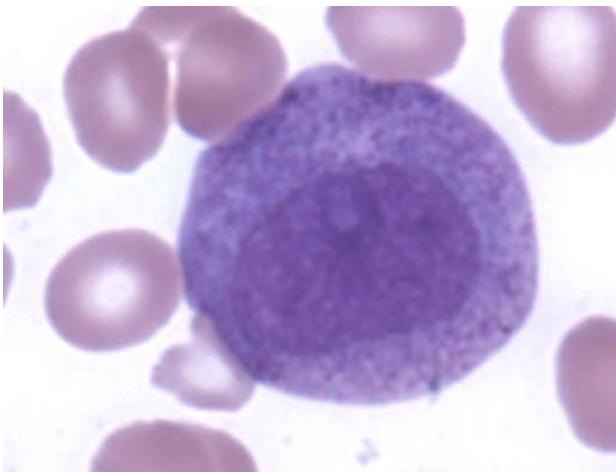
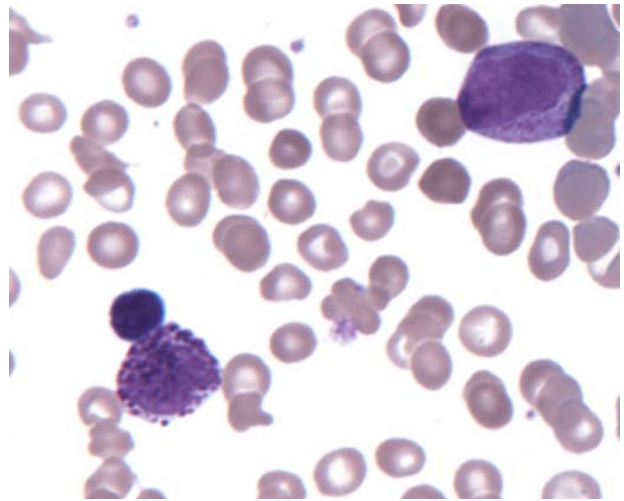
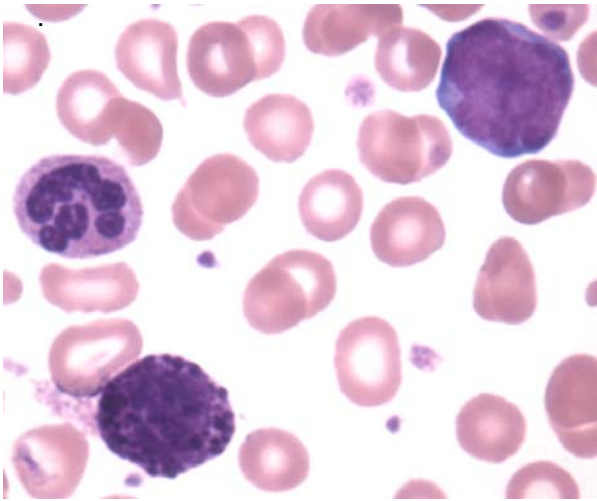
## Haematology

PO Box 50, Westmead  
NSW 2145 Australia  
T +61 2 9845 7038  
F +61 2 9891 5376  
haemqap@rcpaqap.com.au  
www.rcpaqap.com.au

### INTERIM REPORT: MORPHOLOGY PROGRAM CASE STUDY MP7-10b DIAGNOSIS:

#### Chronic Myeloid Leukaemia – Accelerated Phase

Illustrated below are photographs taken from Slide MP7-10b to demonstrate the morphological features in case study 2



Discussion and other diagnostic interpretations that have been considered acceptable, by the Morphology Committee, will be listed in your final report.