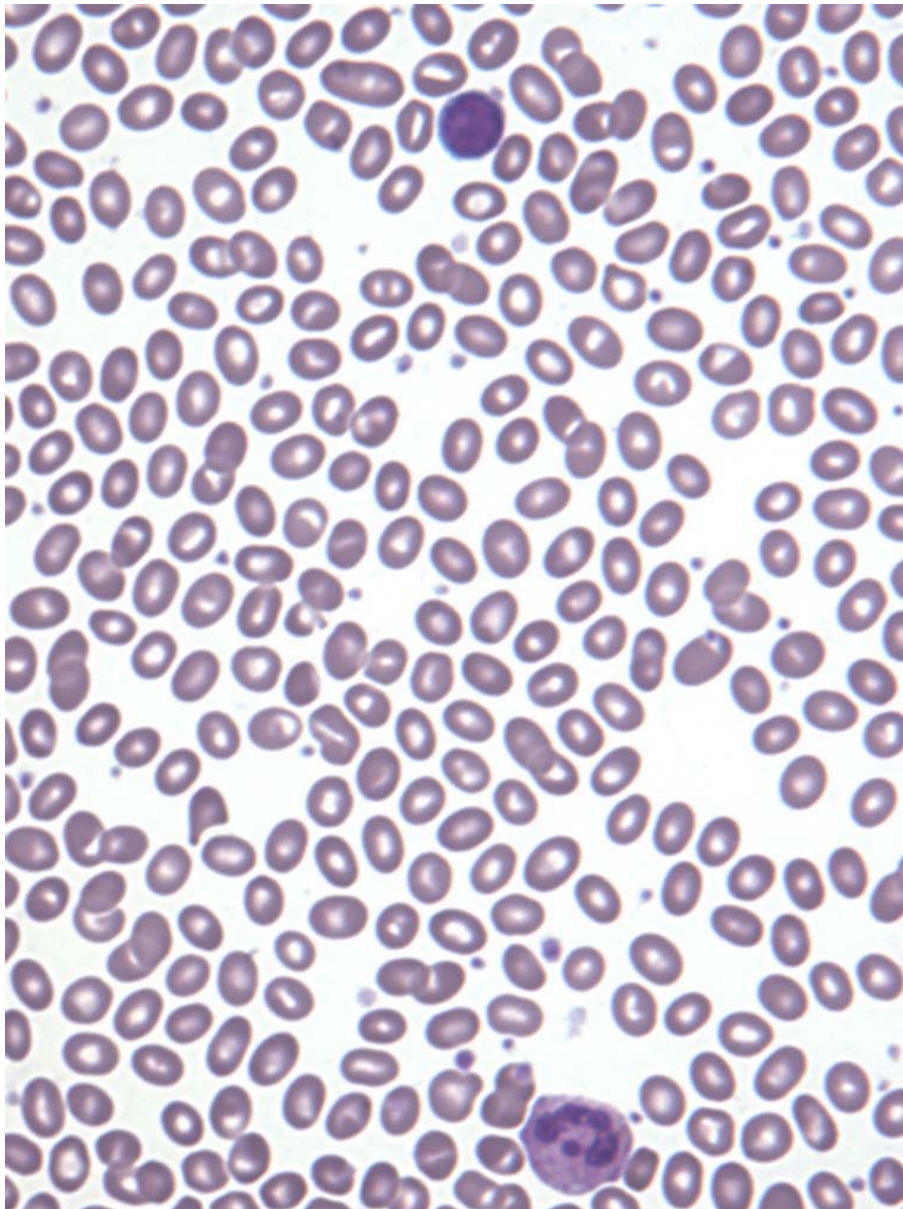




**INTERIM REPORT: MORPHOLOGY PROGRAM
CASE STUDY MO8-02c DIAGNOSIS:**

SE Asian Ovalocytosis + bacterial infection

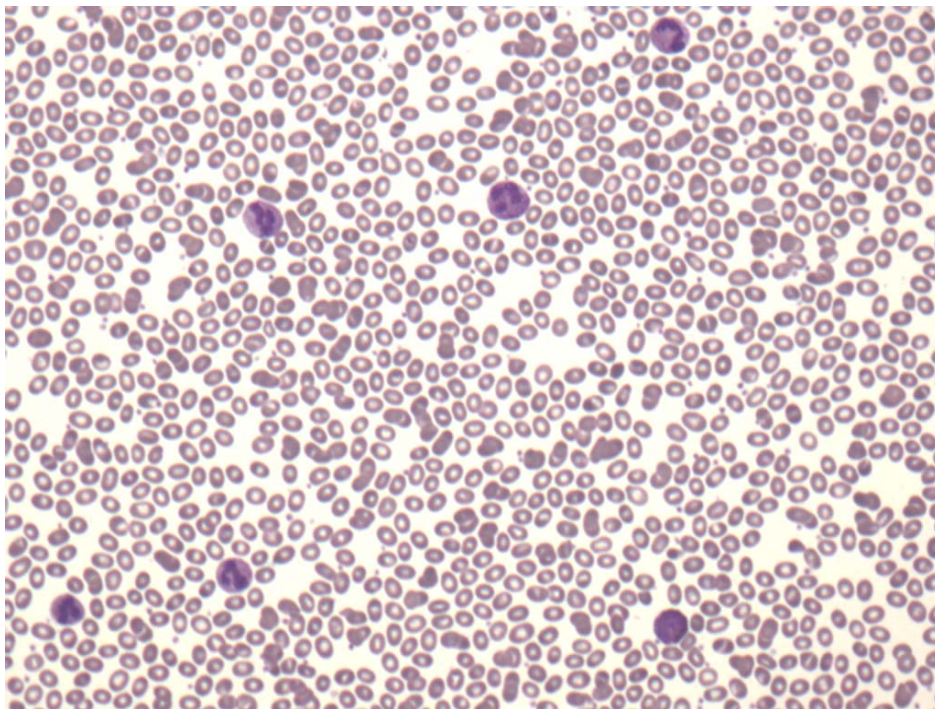
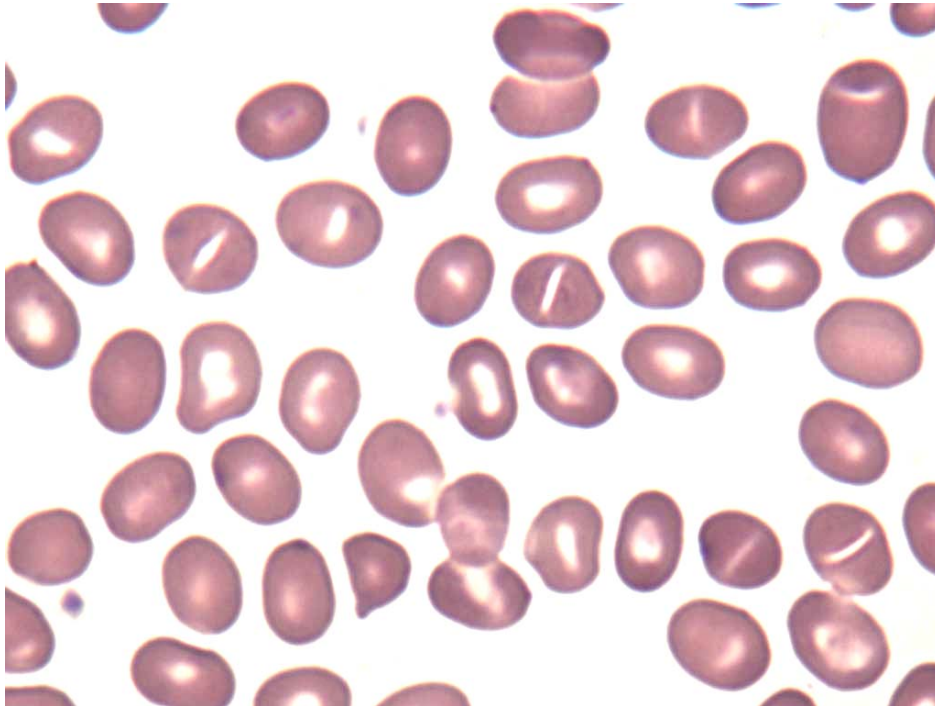
Illustrated below are photographs taken from Slide MO8-02c to demonstrate the morphological features in case study 3.





Haematology

PO Box 50, Westmead
NSW 2145 Australia
T +61 2 9845 7038
F +61 2 9891 5376
haemqap@rcpaqap.com.au
www.rcpaqap.com.au



Discussion and other diagnostic interpretations that have been considered acceptable, by the Morphology Committee, will be listed in your final report.