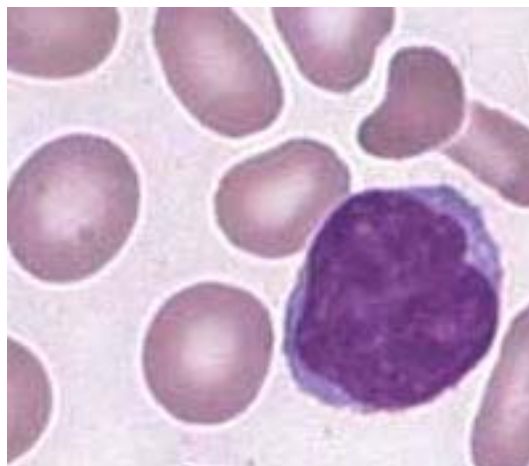
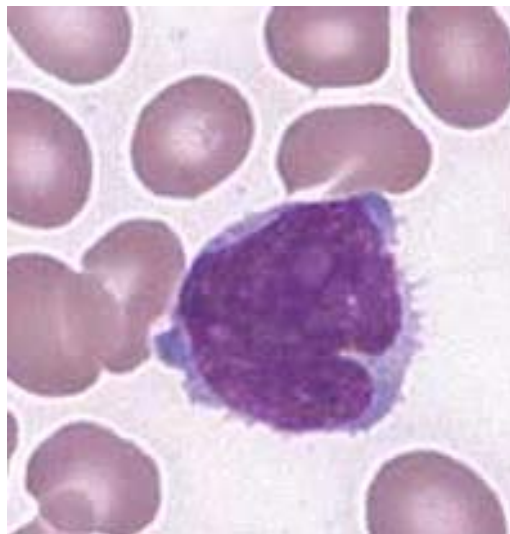




**INTERIM REPORT: MORPHOLOGY PROGRAM
CASE STUDY MO8-05c DIAGNOSIS:**

Mantle cell Lymphoma

Illustrated below are photographs taken from Slide MO8-05c to demonstrate the morphological features in case study 3.



Discussion and other diagnostic interpretations that have been considered acceptable, by the Morphology Committee, will be listed in your final report.