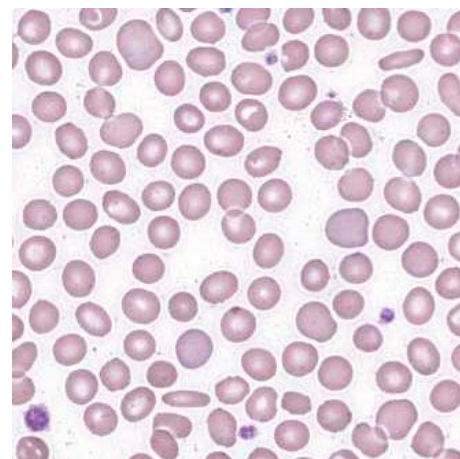
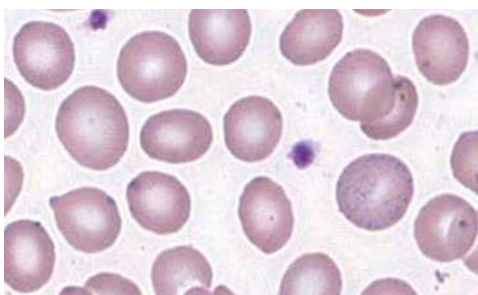
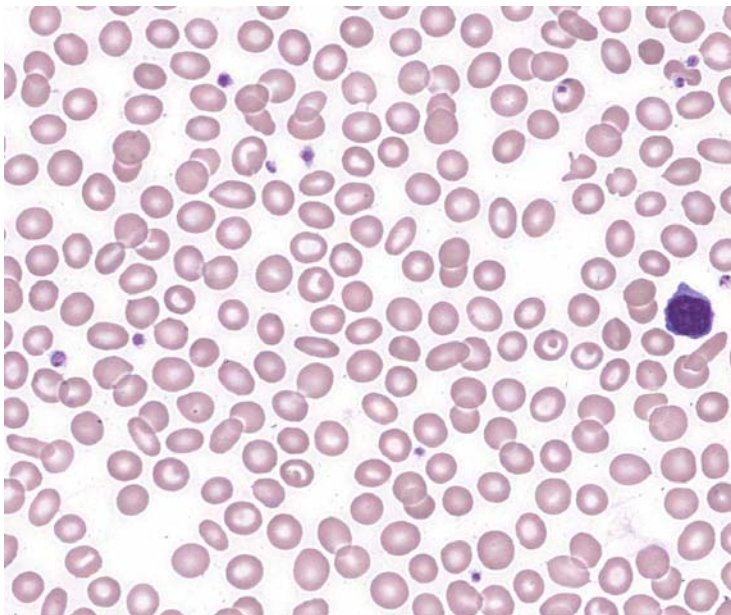




**INTERIM REPORT: MORPHOLOGY PROGRAM  
CASE STUDY MO8-07b DIAGNOSIS:**

**Heterozygous Beta-Thalassaemia**

Illustrated below are photographs taken from Slide MO8-07b to demonstrate the morphological features in case study 2.



Discussion and other diagnostic interpretations that have been considered acceptable, by the Morphology Committee, will be listed in your final report.