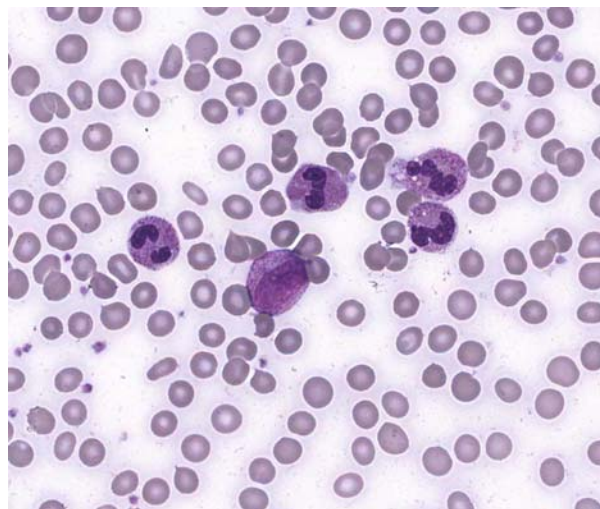
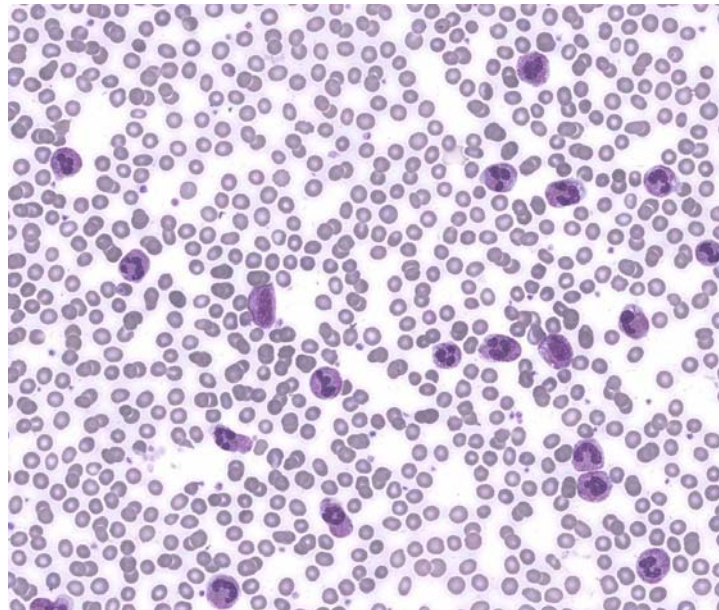




**INTERIM REPORT: MORPHOLOGY PROGRAM  
CASE STUDY MO8-07c DIAGNOSIS:**

**Leukaemoid reaction (secondary to renal tumour)**

Illustrated below are photographs taken from Slide MO8-07c to demonstrate the morphological features in case study 3.



Discussion and other diagnostic interpretations that have been considered acceptable, by the Morphology Committee, will be listed in your final report.