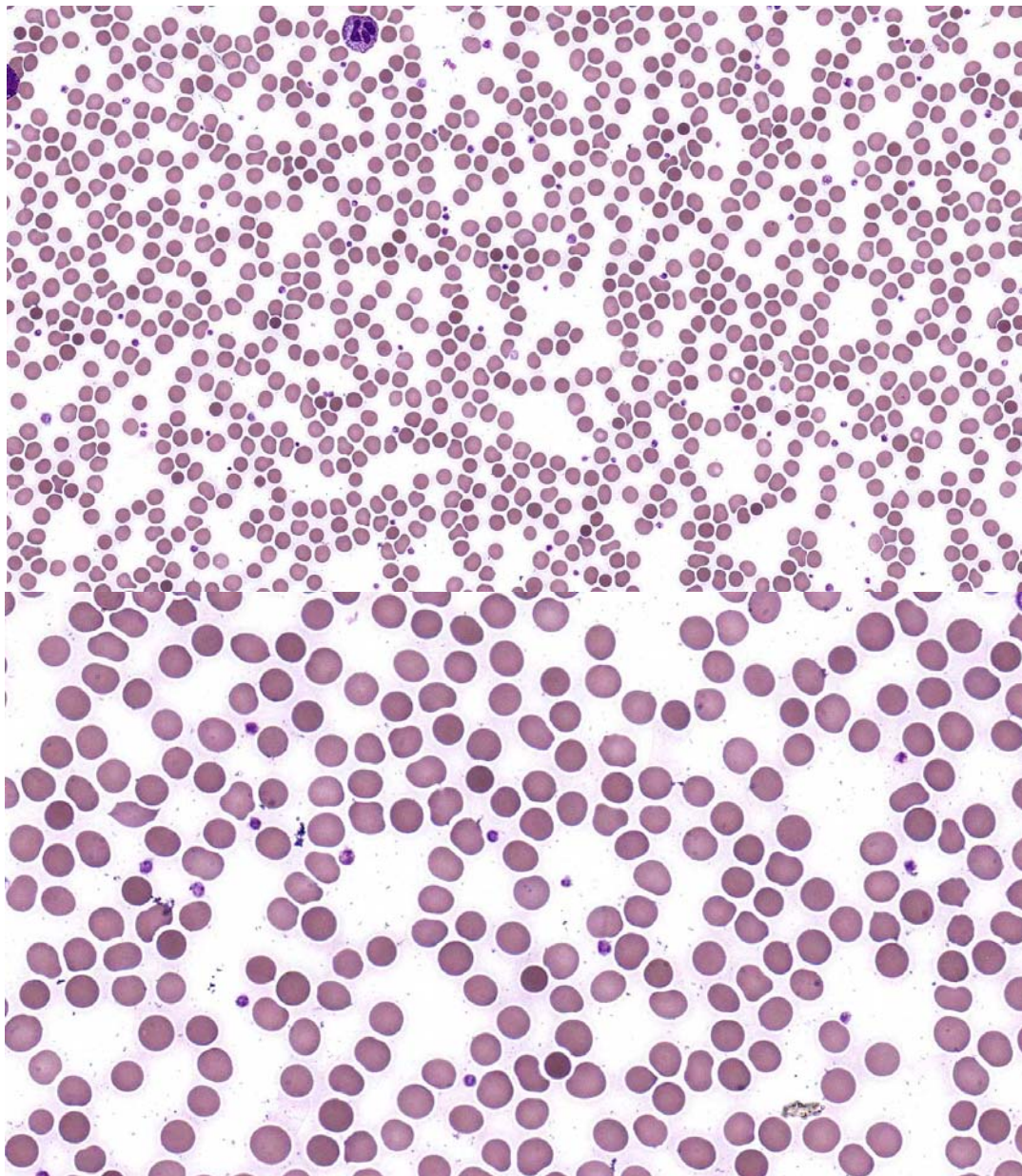




**INTERIM REPORT: MORPHOLOGY PROGRAM
CASE STUDY MO9-02a DIAGNOSIS:**

Hereditary Spherocytosis

Illustrated below are photographs taken from Slide MO9-02a to demonstrate the morphological features in case study 1.



Discussion and other diagnostic interpretations that have been considered acceptable, by the Morphology Committee, will be listed in your final report.