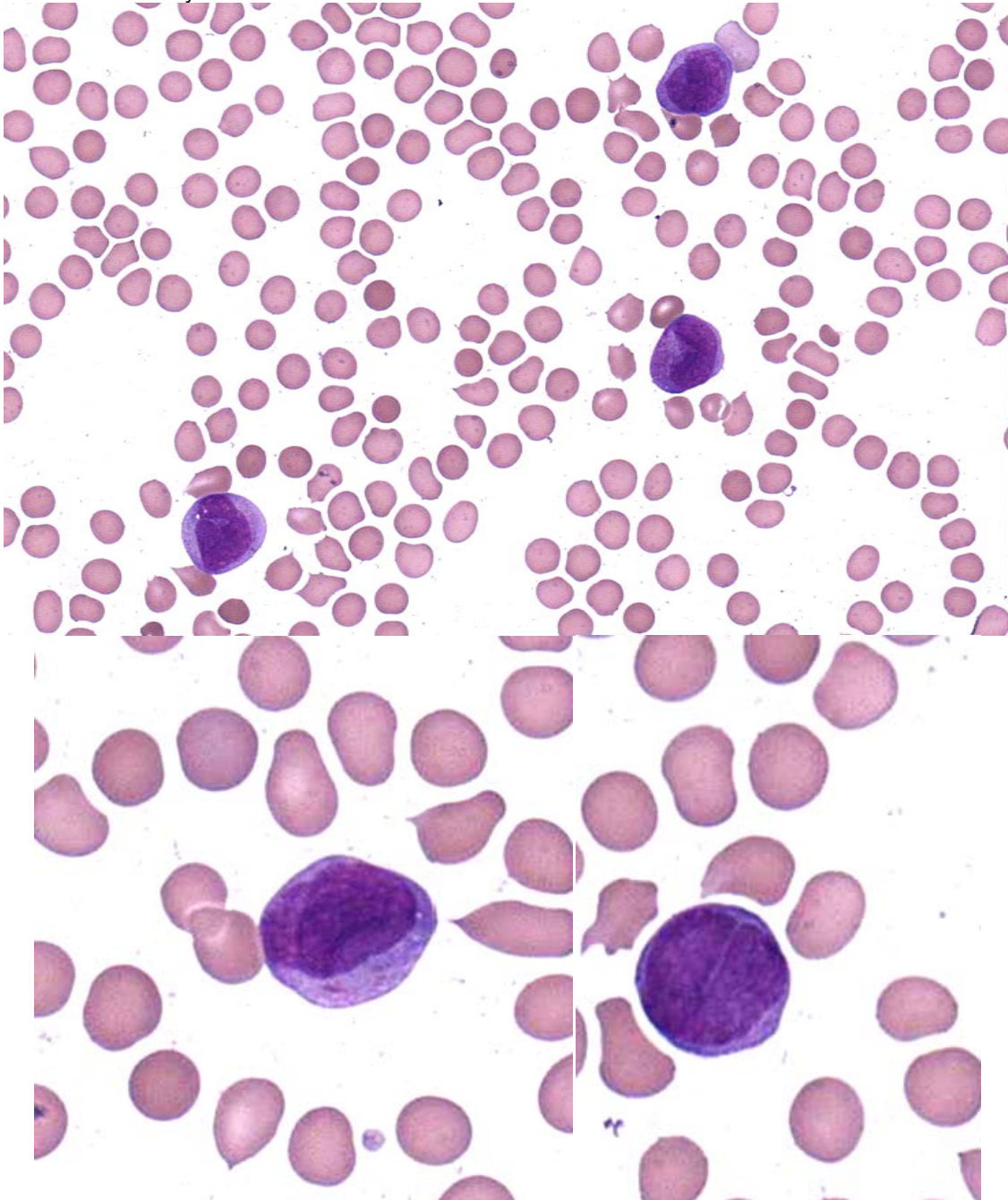




**INTERIM REPORT: MORPHOLOGY PROGRAM  
CASE STUDY MO9-02b DIAGNOSIS:**

Acute Promyelocytic Leukaemia (microgranular variant)

Illustrated below are photographs taken from Slide MO9-02b to demonstrate the morphological features in case study 2.



Discussion and other diagnostic interpretations that have been considered acceptable, by the Morphology Committee, will be listed in your final report.