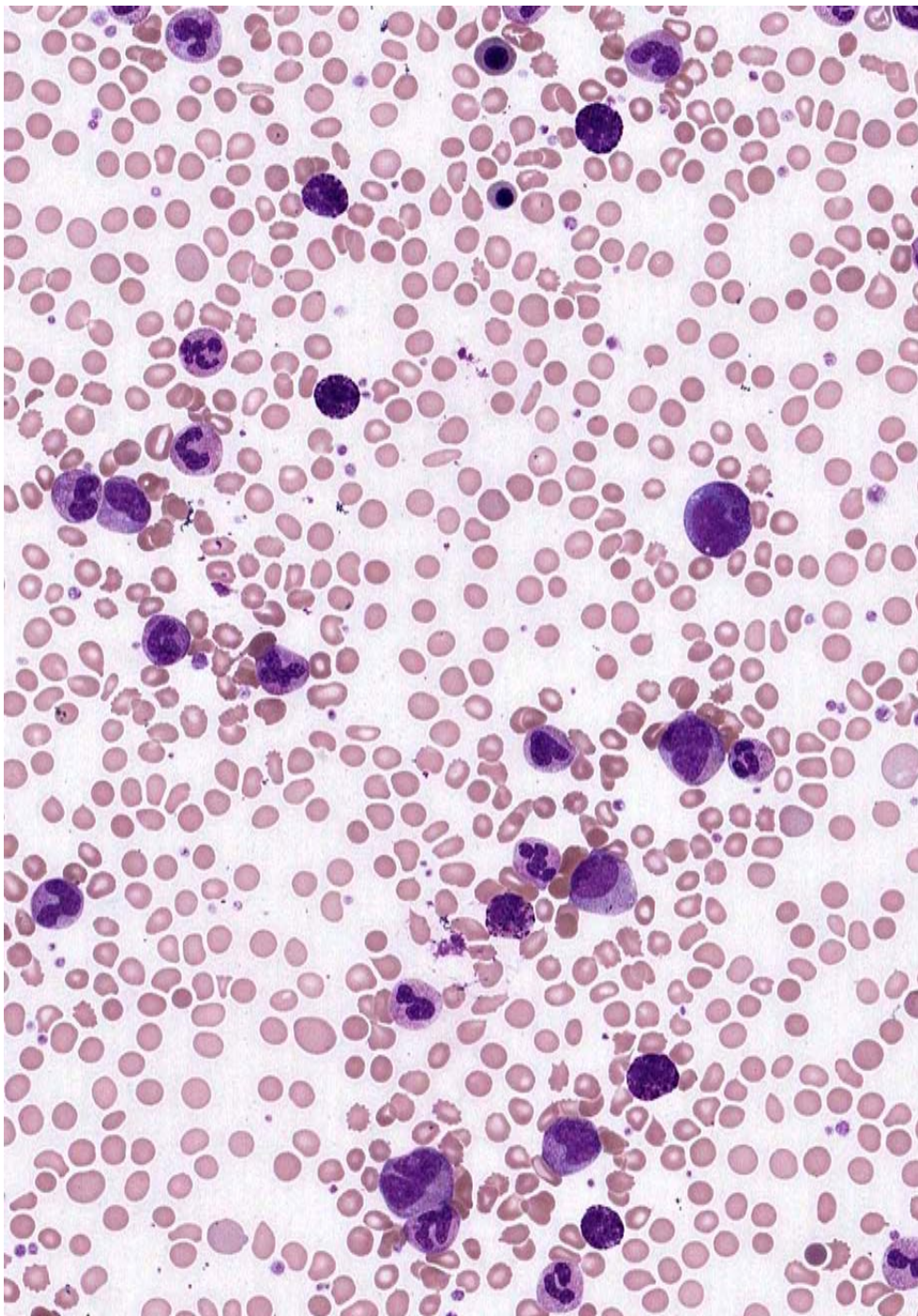




**INTERIM REPORT: MORPHOLOGY PROGRAM
CASE STUDY MO9-02c DIAGNOSIS:**

Chronic Myeloid Leukaemia

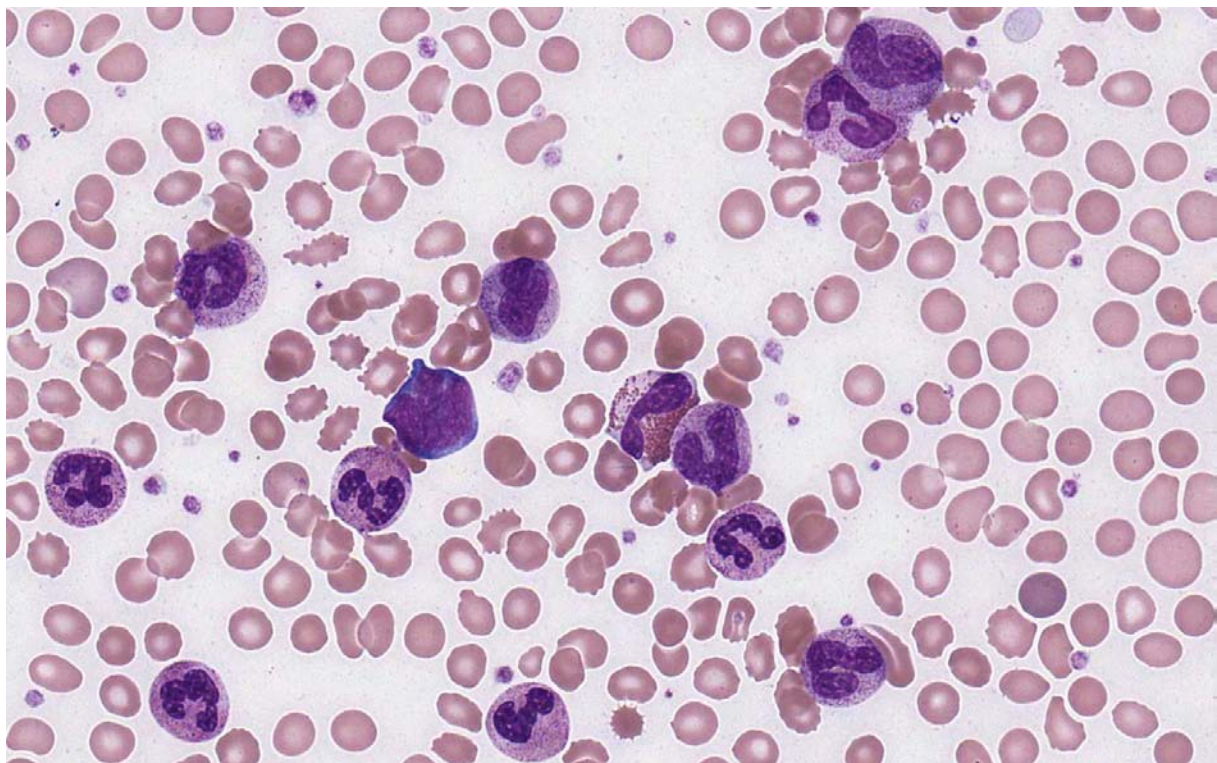
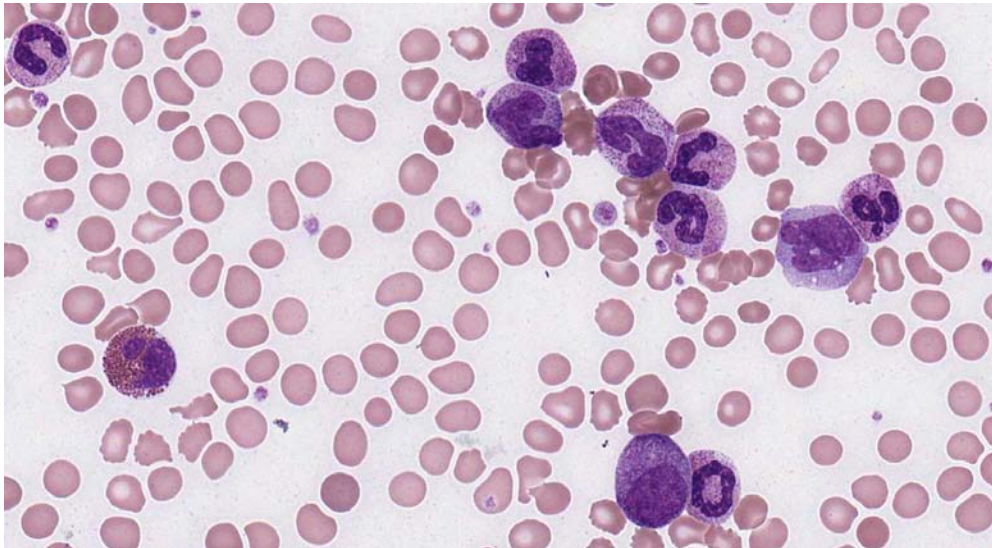
Illustrated below are photographs taken from Slide MO9-02c to demonstrate the morphological features in case study 3.





**INTERIM REPORT: MORPHOLOGY PROGRAM
CASE STUDY MO9-02c DIAGNOSIS:**

Chronic Myeloid Leukaemia



Discussion and other diagnostic interpretations that have been considered acceptable, by the Morphology Committee, will be listed in your final report.