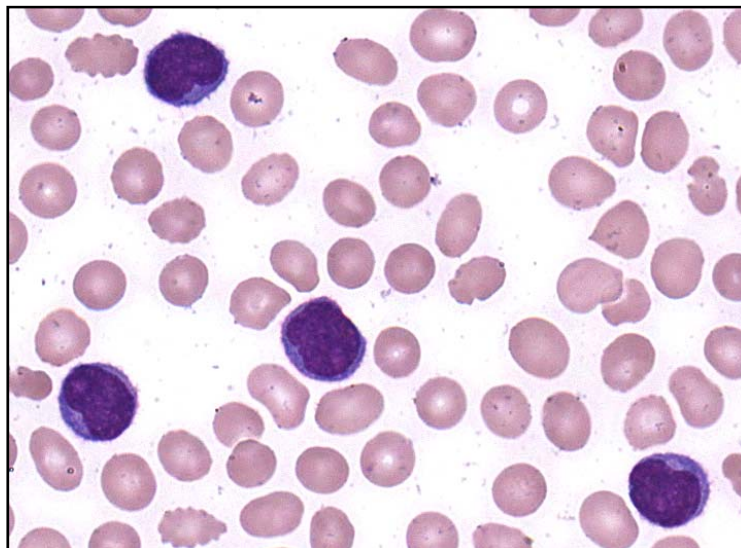
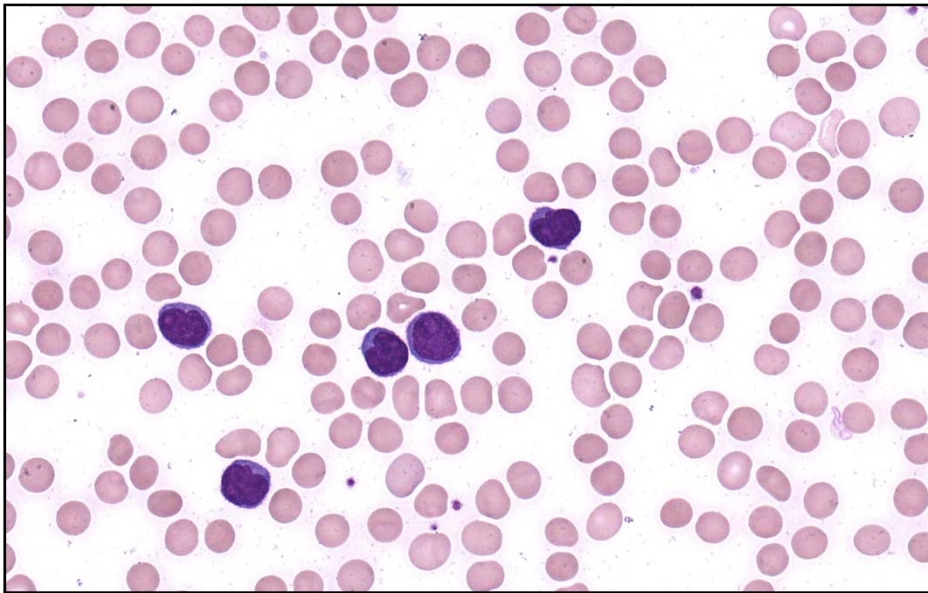




**INTERIM REPORT: MORPHOLOGY PROGRAM
CASE STUDY MO9-05b DIAGNOSIS:**

T- cell polymorphocytic leukaemia

Illustrated below are photographs taken from Slide MO9-05b to demonstrate the morphological features in case study 2.



Discussion and other diagnostic interpretations that have been considered acceptable, by the Morphology Committee, will be listed in your final report.