

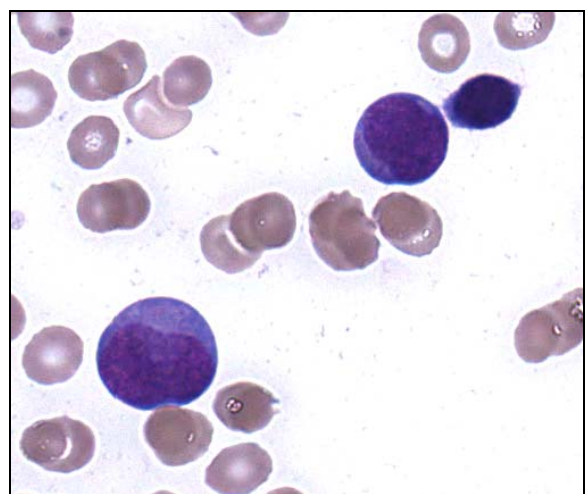
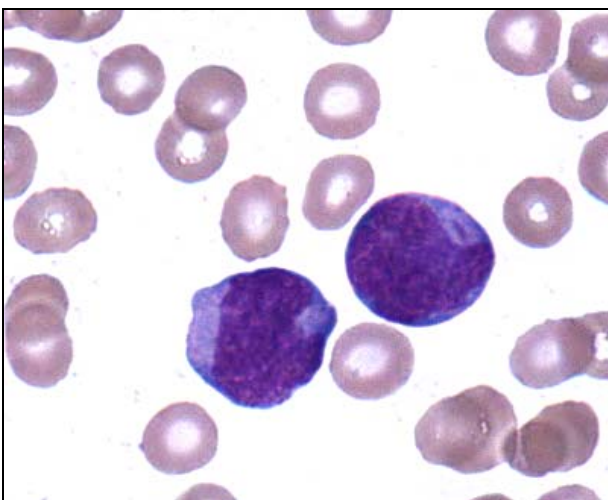
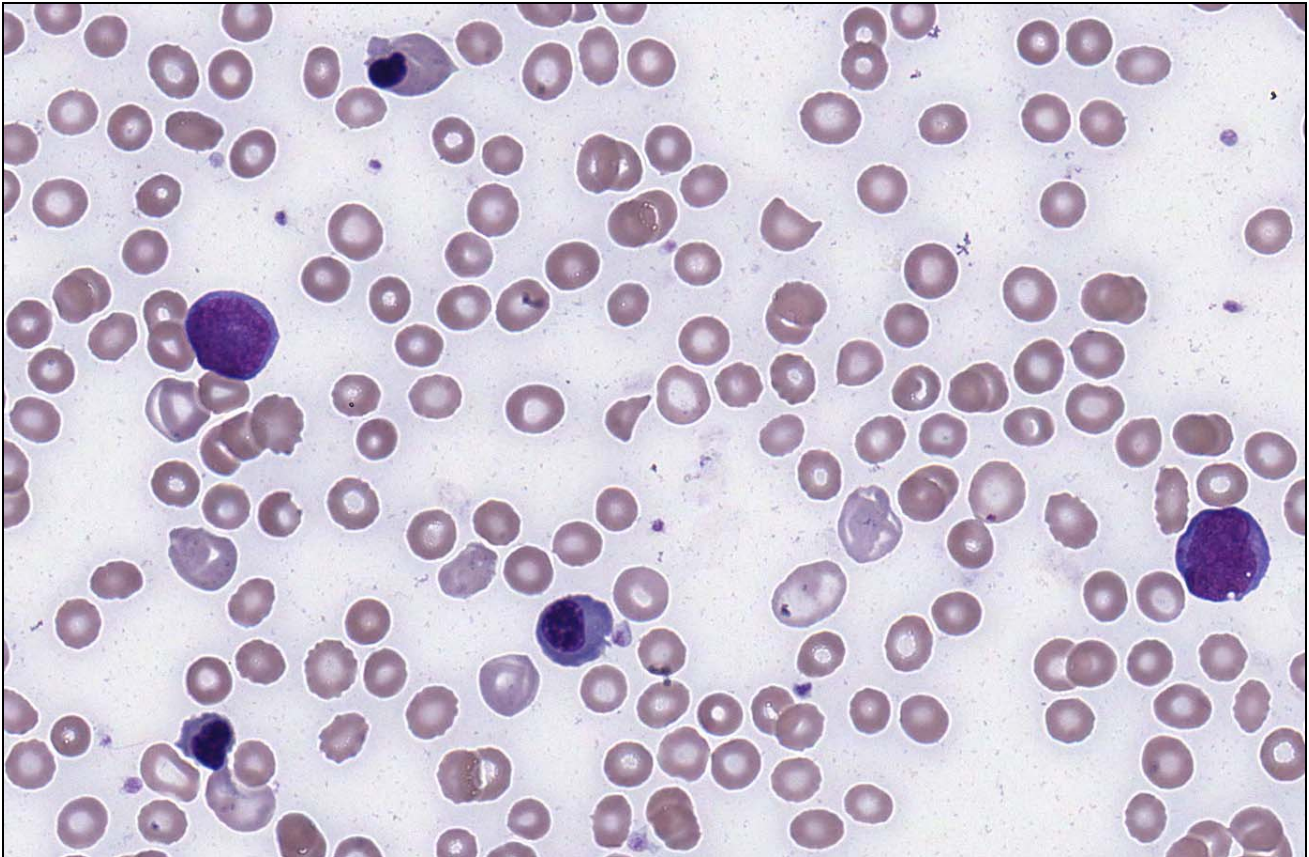


INTERIM REPORT: MORPHOLOGY PROGRAM

CASE STUDY MO10-02c DIAGNOSIS:

Acute erythroid leukaemia / Erythroleukaemia (erythroid/myeloid)

Illustrated below are photographs taken from Slide MO10-02c to demonstrate the morphological features in case study 3.



Discussion and other diagnostic interpretations that have been considered acceptable, by the Morphology Committee, will be listed in your final report