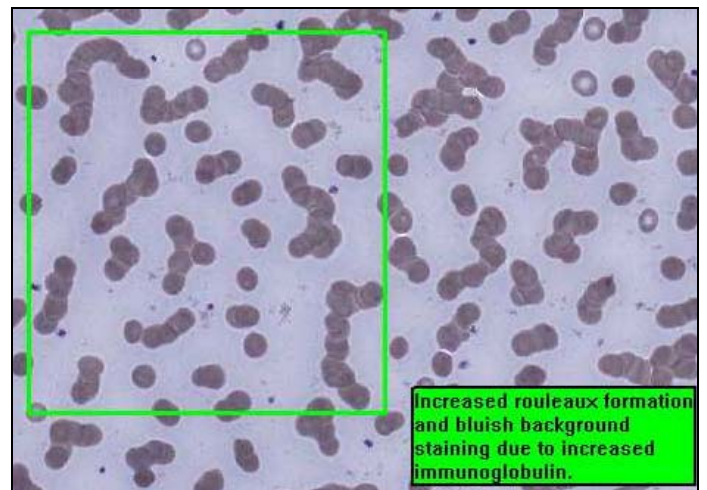
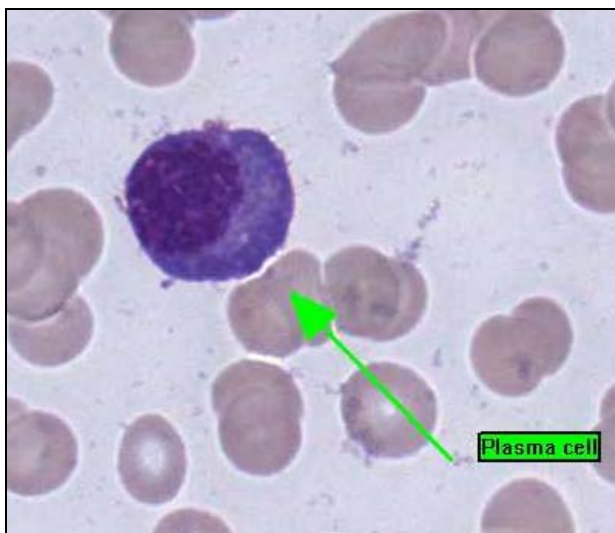
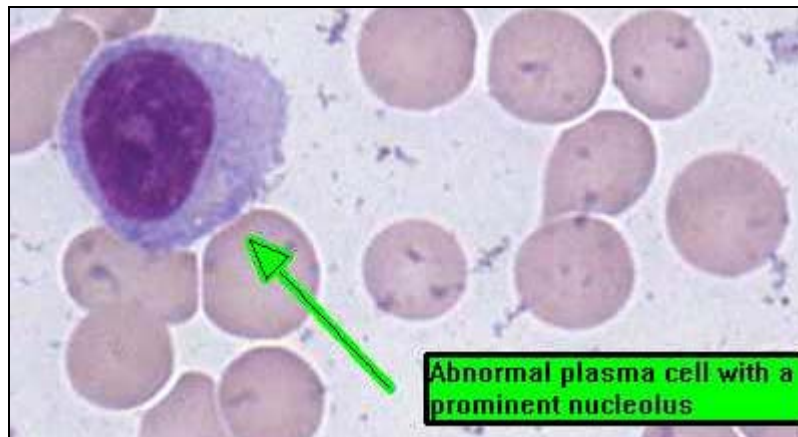




**INTERIM REPORT: MORPHOLOGY PROGRAM
CASE STUDY MO10-07c DIAGNOSIS:
Plasma Cell Myeloma**

Illustrated below are photographs taken from Slide MO10-07c to demonstrate the morphological features in case study 3.



Discussion and other diagnostic interpretations that have been considered acceptable, by the Morphology Committee, will be listed in your final report.