

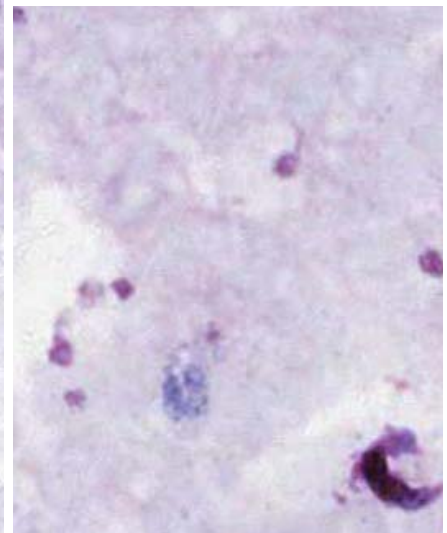
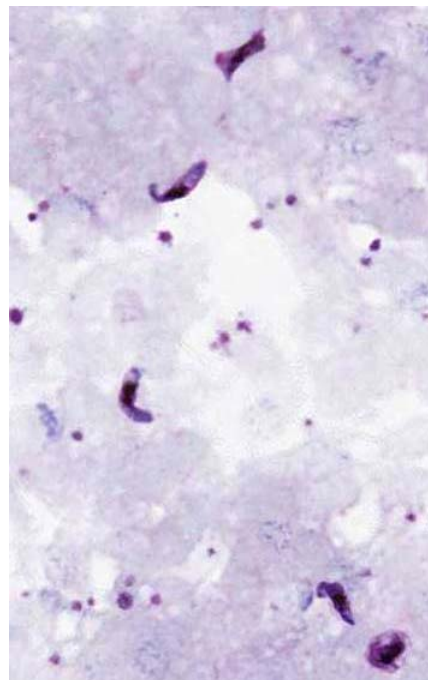
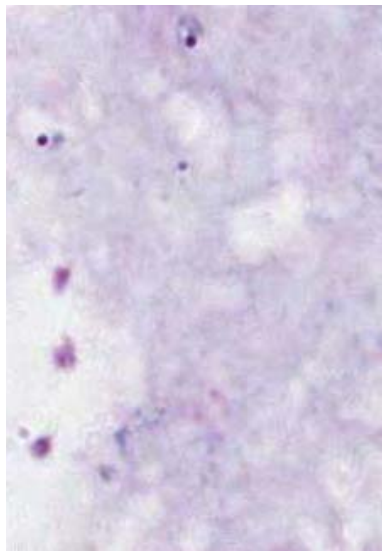
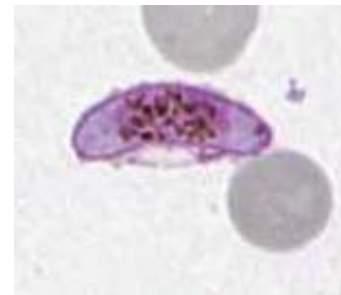
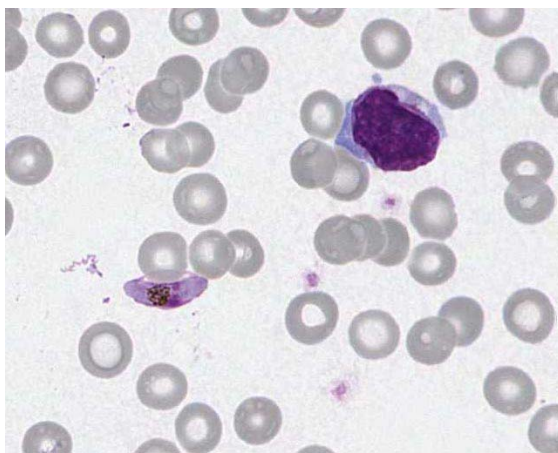


INTERIM REPORT: MALARIAL PARASITE PROGRAM

CASE STUDY MA8-03c/d DIAGNOSIS:

Plasmodium falciparum

Illustrated below are photographs taken from Slide MA8-03c/d to demonstrate the morphological features in case study 1



Discussion and other diagnostic interpretations that have been considered acceptable, by the Malarial Parasite Committee, will be listed in your final report.