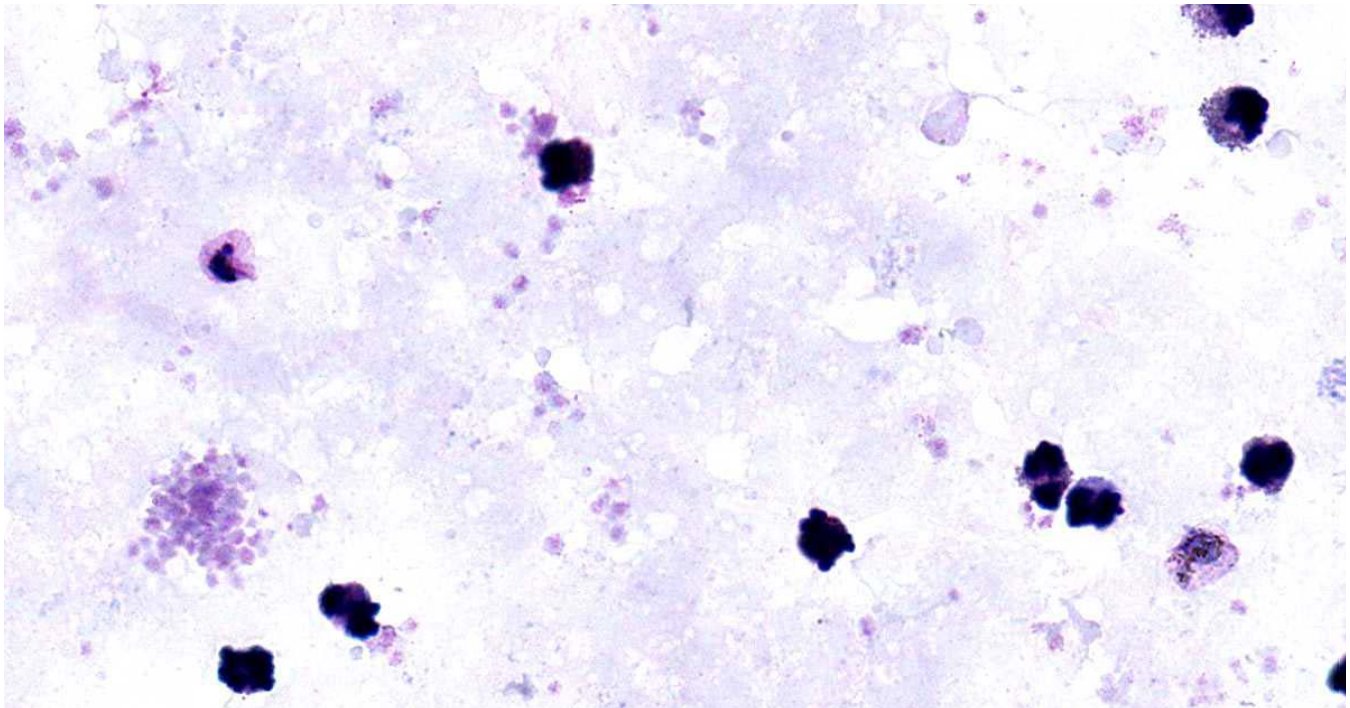
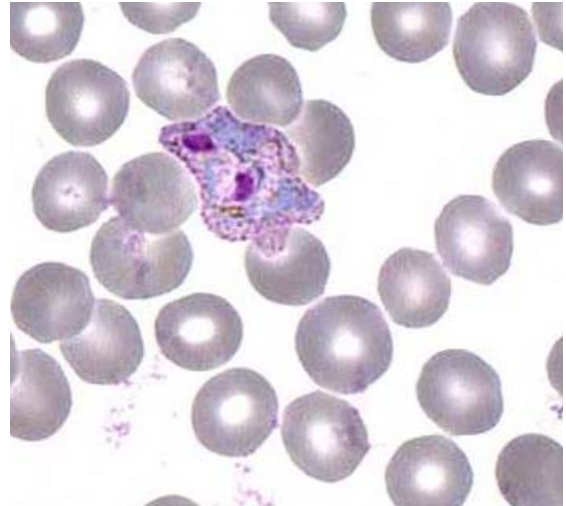
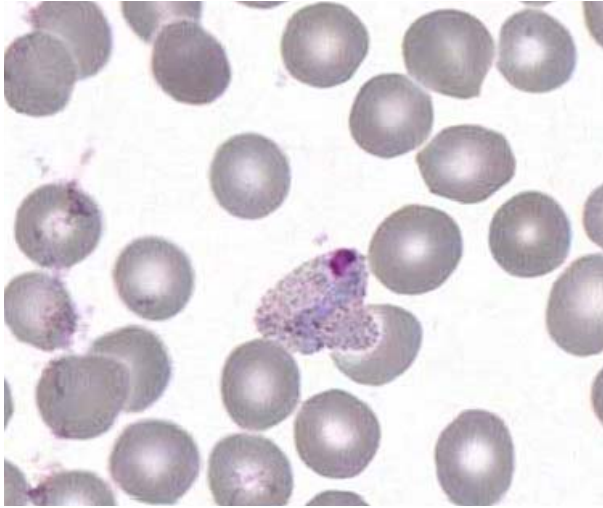




**INTERIM REPORT: MALARIAL PARASITE PROGRAM**

**CASE STUDY MA8-011c/d DIAGNOSIS:**

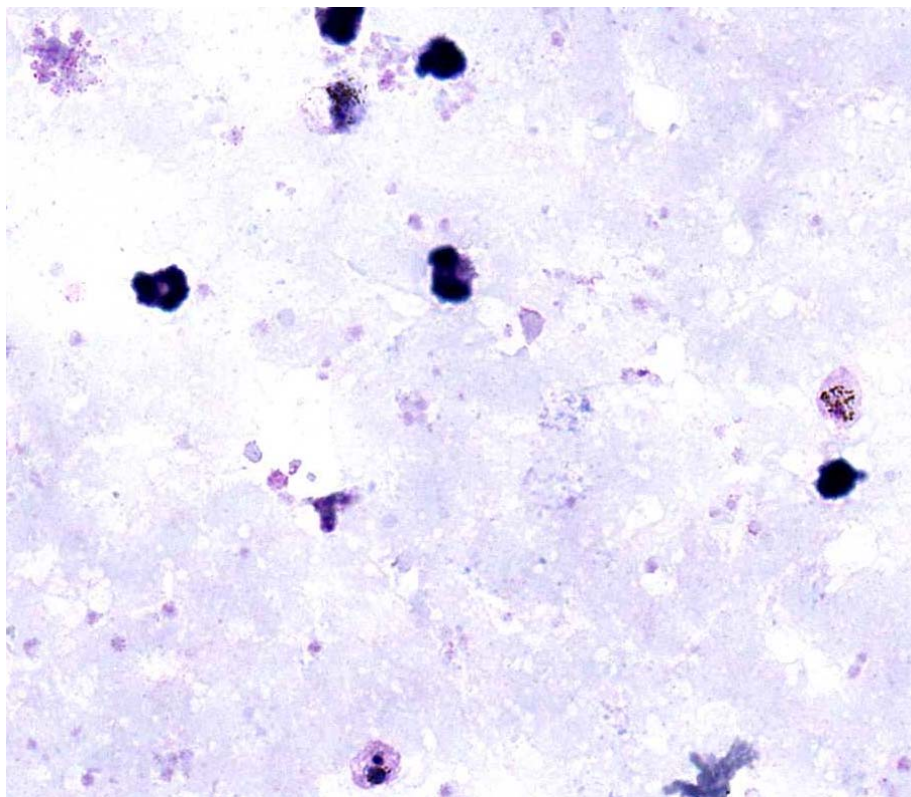
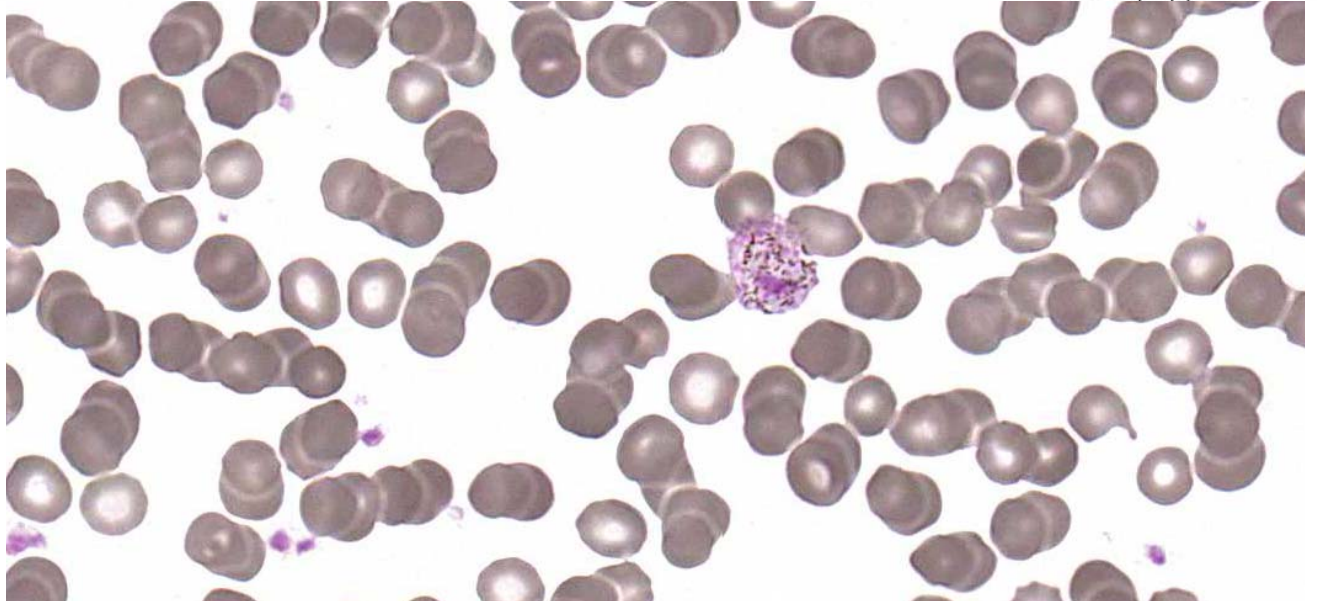
***Plasmodium vivax***





## Haematology

PO Box 50, Westmead  
NSW 2145 Australia  
T +61 2 9845 7038  
F +61 2 9891 5376  
haemqap@rcpaqap.com.au  
www.rcpaqap.com.au



Discussion and other diagnostic interpretations that have been considered acceptable, by the Malarial Parasite Committee, will be listed in your final report.