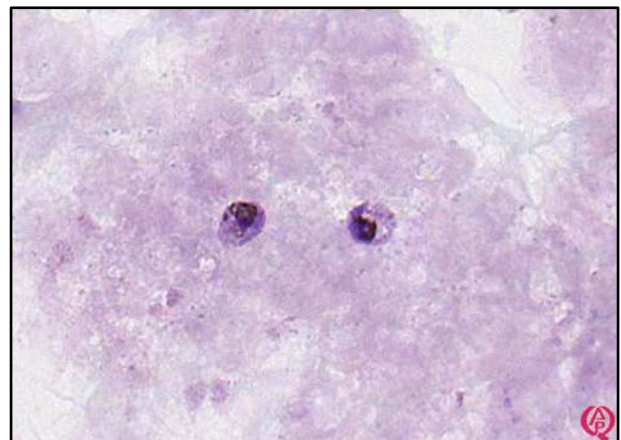
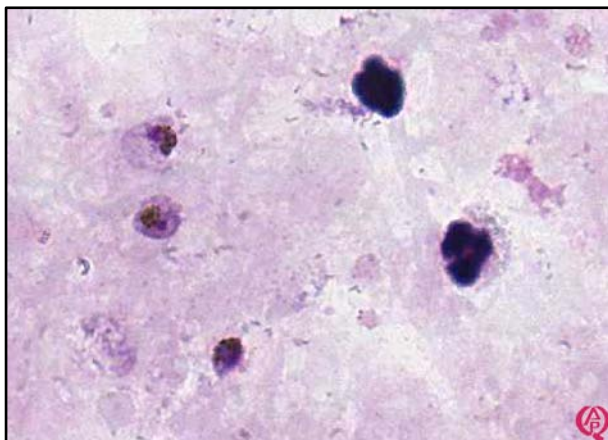
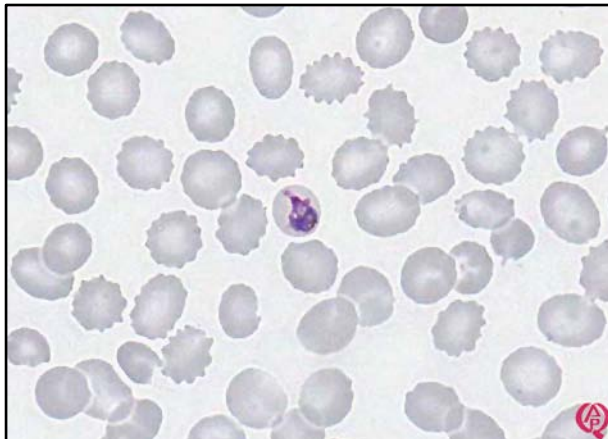




INTERIM REPORT: MALARIA PROGRAM
CASE STUDY MA11-11c/d
DIAGNOSIS: *Plasmodium malariae*

Illustrated below are photographs taken from Slides MA11-11c/d to demonstrate the morphological features in case study 2.



Discussion and other diagnostic interpretations that have been considered acceptable, by the Morphology Committee, will be listed in your final report.